

project 2

week 1

gathering data from stories

with Martha & Marieke

WEEK 1 - WARMING-UP EXERCISE

mapping the class situation related to flooding

Let's start empathising with the subject of project 2 with a short assignment.

Give answer to the questions on the whiteboard of this exercise: what is the sea/water level in your hometown?; how far do you live from rivers or sea?; in which periods of the year or month is the risk of flooding higher?

If you know about factors that cause risk of flood close to the place you live, write them down. Compare your answers with other students answers and use the provided participant's data to make a visualisation!

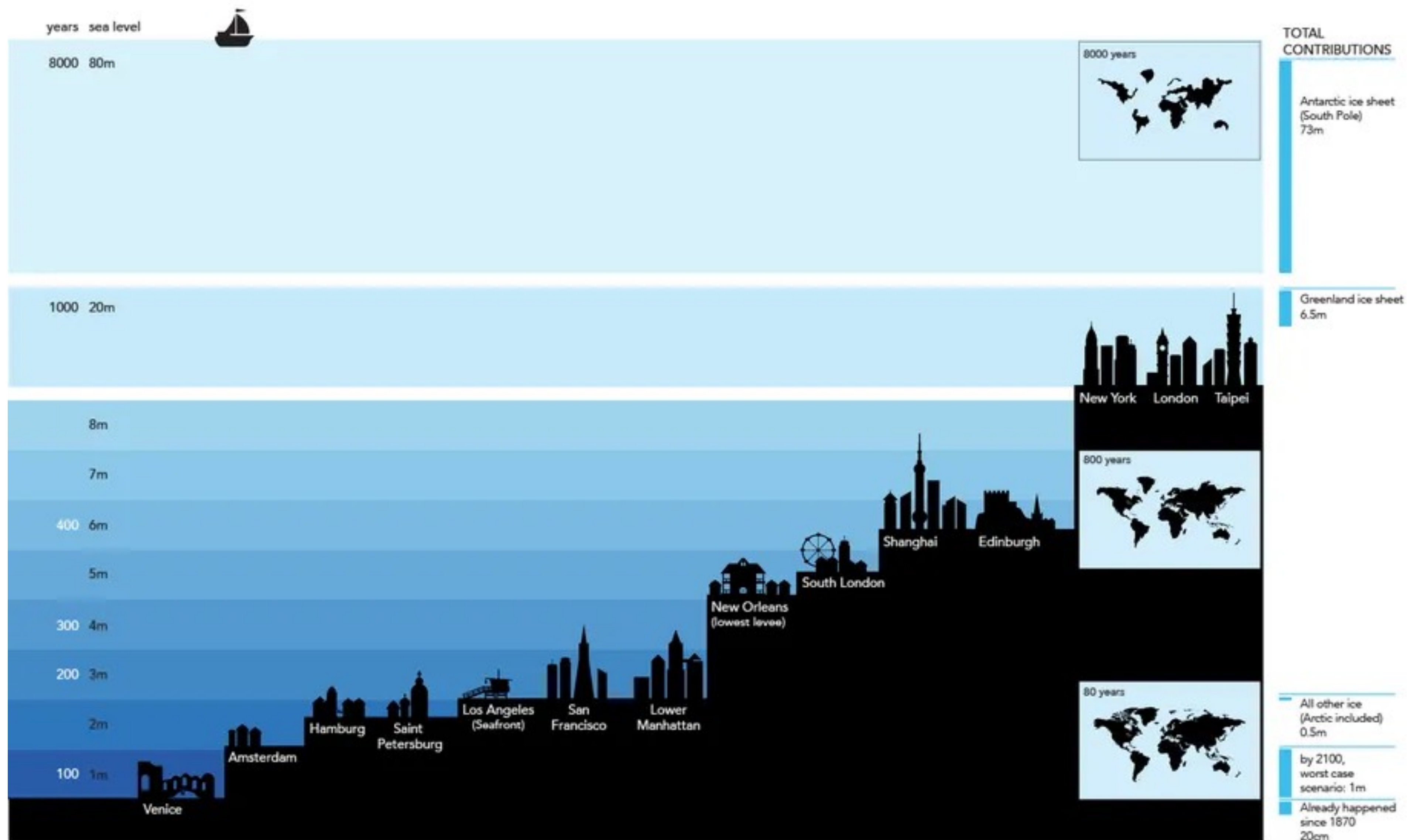


Output (on the Miro board - week 1):

- Post your "fast data visualisation" and discuss the group output with your class.

When Sea Levels Attack!

How long have we got?



David McCandless // V3.0// Feb 2014
Illustration: Laura Sullivan, Joe Swainson, Fabio Bergamaschi

InformationIsBeautiful.net

Note:
Heights above sea level
vary across cities.
Lowest points used

Source: IPCC, NASA,
Realclimate.org,
NewScientist.com,
Potsdam Institute,
Sea Level Explorer

WEEK 1 - ASSIGNMENT 1a:

analysis of the storytelling in Lohuizen's book (or website)

Get aware of storytelling elements around "the impact of rising sea levels on humans". Use the questions that arise you while reading the book/ website to create a system (template) to gather interesting data (e.g. the combination of images and text/captions that have the most or less emotional impact on yourself; used sort of images and visual language; relevant objects in the storytelling of the images; used symbolism, metaphors and "tone of voice" to communicate about this topic).



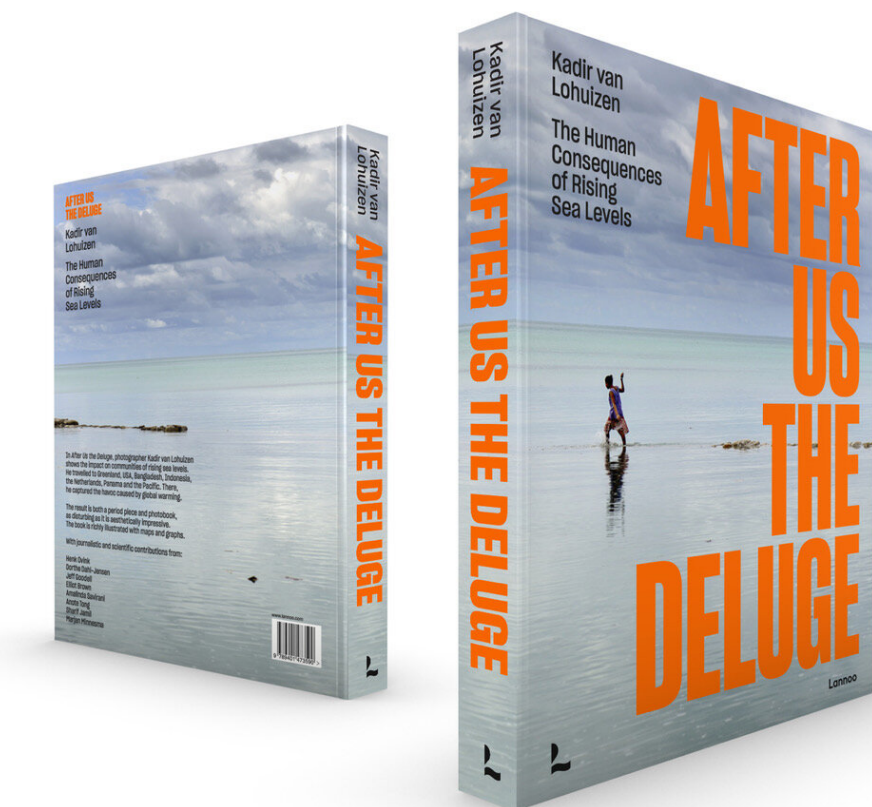
Output (on the Miro board - week 1):

- Post the system/template/excel sheet you've used to gather data from the stories in the book (of video's or website), as well as the pictures and captions where your collected data comes from.

SEE THE WORLD AS A DATA COLLECTOR



Bangladesh Climate refugees



Due to cyclone Aila which hit Bangladesh in May 2009, still 60,000 people are displaced in the district Dakop. This is almost the total population of Dakop. The cyclone hit the area with a surge of 10 meters and the water since then has hardly receded; due to this people lost their land and therefor their means of living. Bangladesh presently has a total of 6,5 million displaced due to floods and the rising of the sea level.

Original Filename: LOK133SE0059.JPG

Date created: 13.01.2011

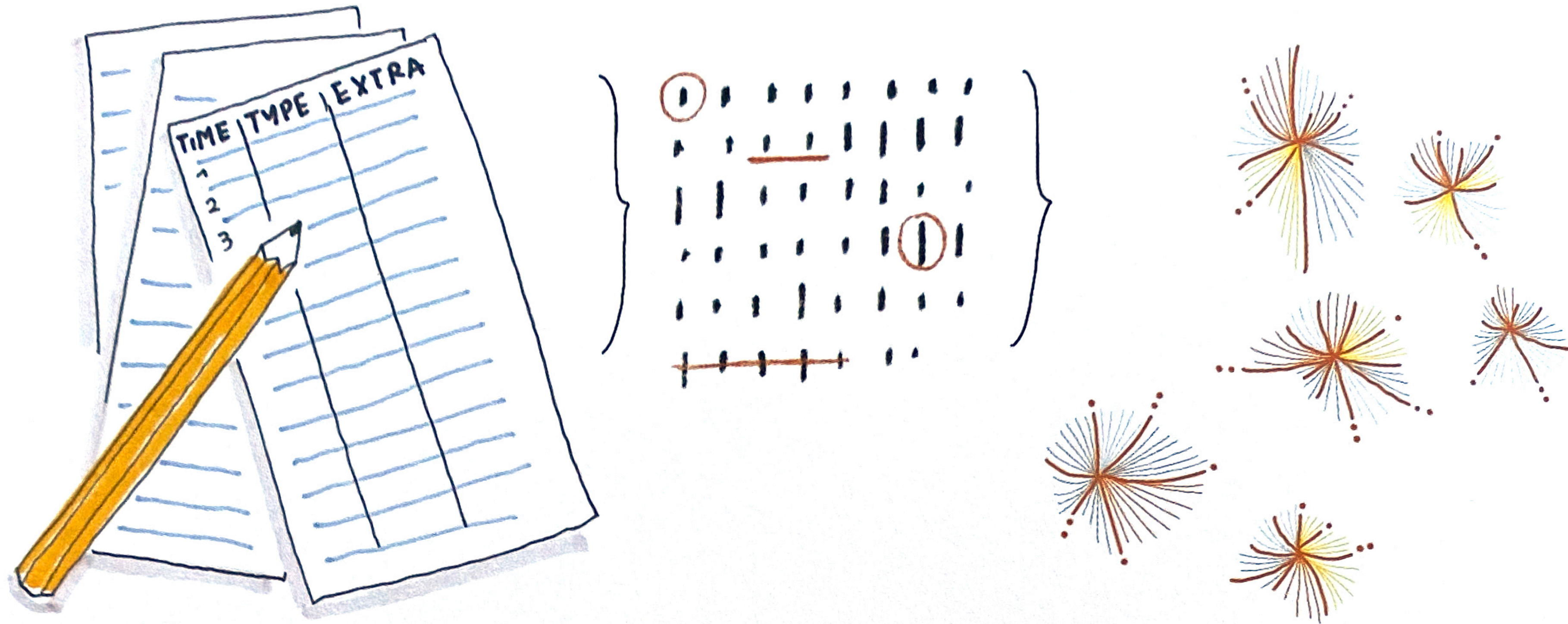
Credit: kadir van lohuizen / NOOR

Country: Bangladesh

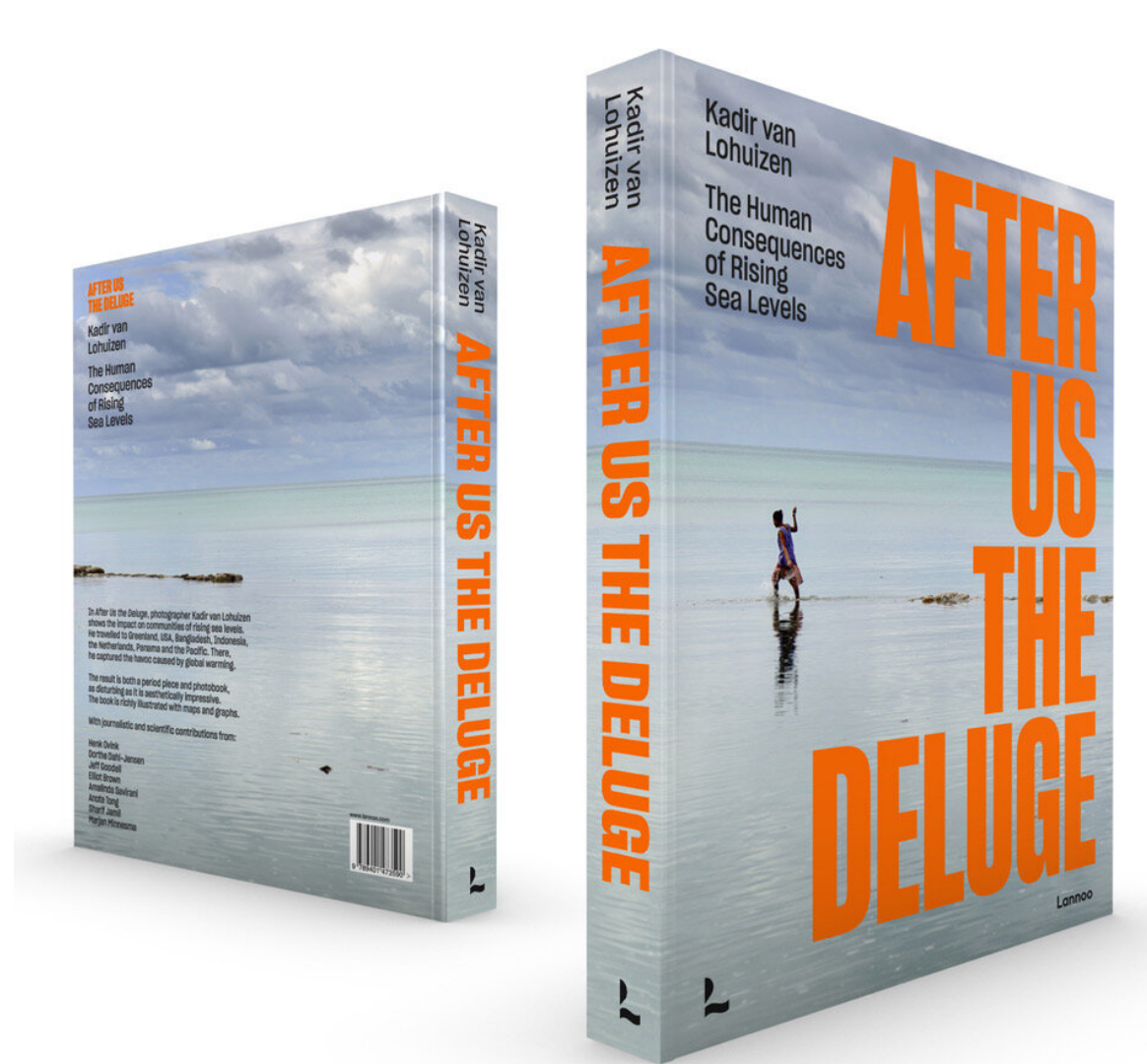
Kadir van Lohuizen - Photographer

Source:
<https://archive.noorimages.com/>

SEE THE WORLD AS A DATA COLLECTOR

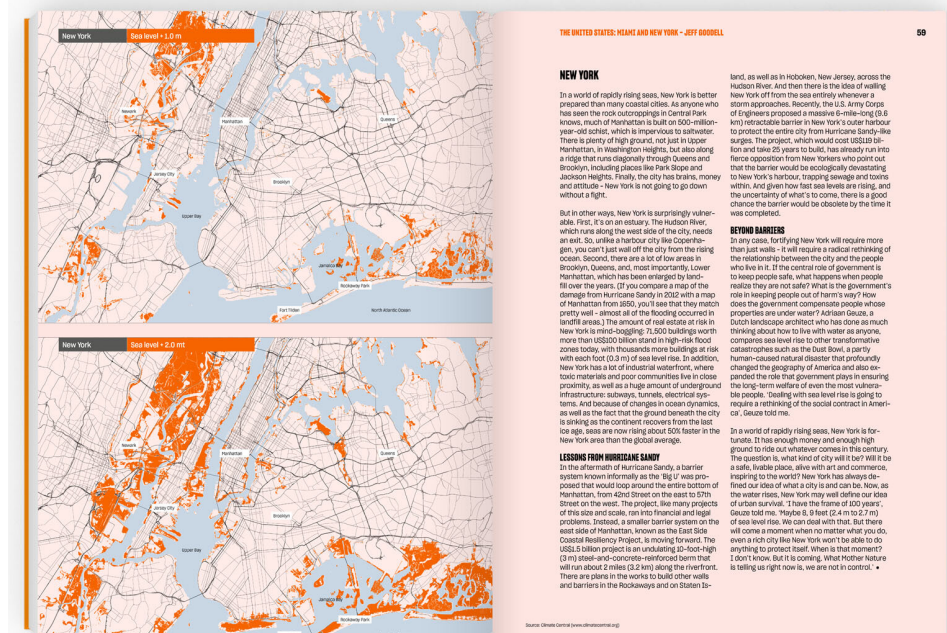


SEE THE WORLD AS A DATA COLLECTOR



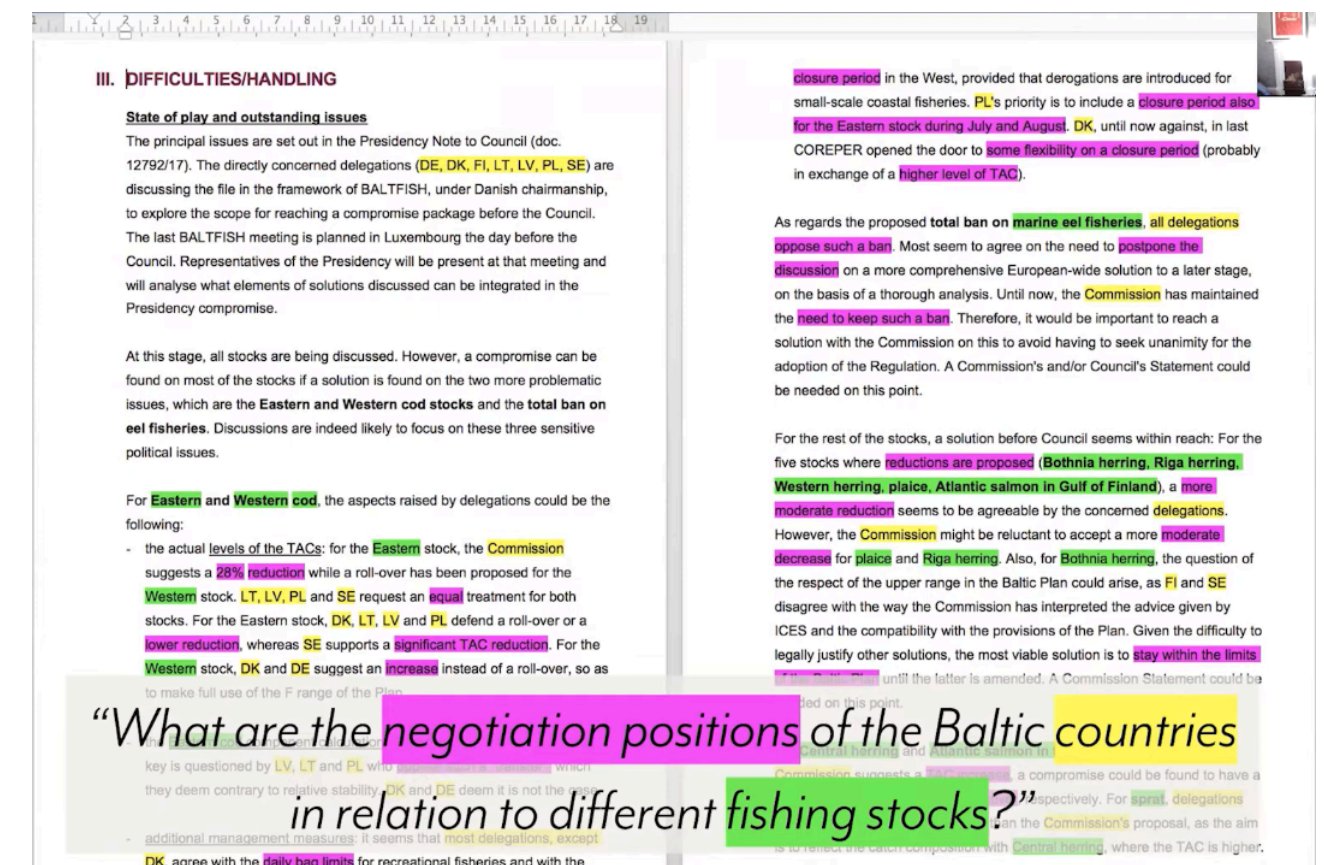
BOOK as data source

Kadir van Lohuizen



TEXT as source:

Andy Kirk's example during his Guest Lecture

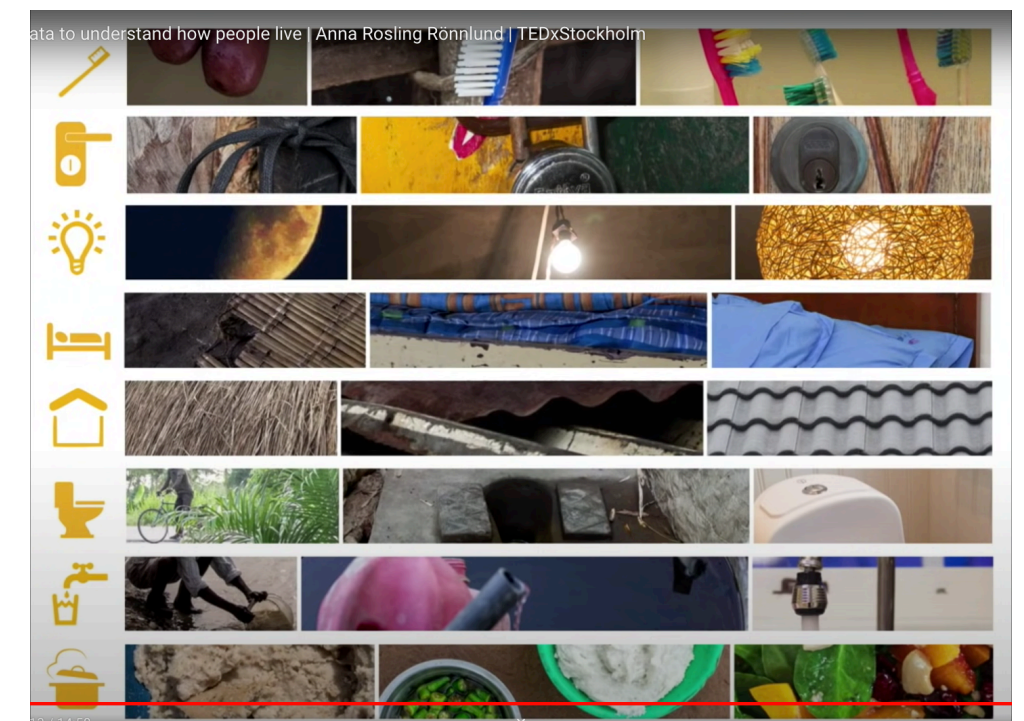


Watch: Guest Lecture by Andy Kirk "Qualitative Data" (32:56)

<https://www.youtube.com/watch?v=hTpSogtRhjs&t=11s>

IMAGES as source:

Example of Anna Rosling



Watch: TEDx Talk Anna Rosling "Using photos as data to understand how people live" (15:00)

<https://www.youtube.com/watch?v=vvsAvvKeGhc>

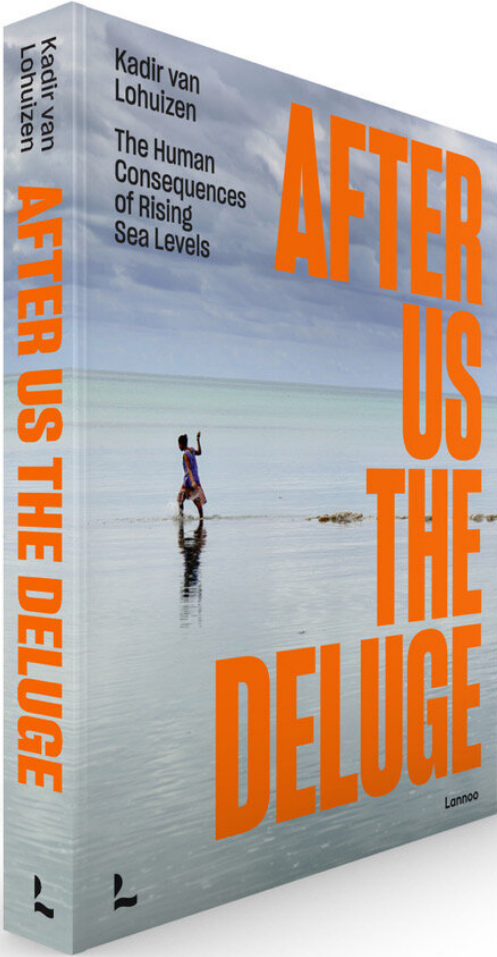
BEGIN WITH A QUESTION

BEGIN WITH A PRIMARY QUESTION:
WHAT DO YOU WANT TO KNOW AND EXPLORE?
THEN ENRICH THE DATA (AND GIVE THE DRAWINGS
DEPTH) BY ASKING ADDITIONAL SMALLER,
CONTEXTUAL QUESTIONS.



BEGIN WITH A QUESTION

“What are the negotiation positions of the Baltic countries in relation to different fishing stocks?”



GREENLAND

UNITED STATES

PANAMA

INDONESIA

PACIFIC

BANGLADESH

NETHERLANDS

DORTHE DAHL-JENSEN P18
GREENLAND P24

JEFF ROODELL P64
MIAMI P60
FLORIDA P74
NEW YORK P78

ELLIOT BROWN P80
GUNA YALA P96

AMALINDA SAVITRANI P118
JAKARTA P124

ANOTE TONG P146
KIRIBATI P152
FIJI P170
CARTERET ISLANDS, PAPUA NEW GUINEA P180
MARSHALL ISLANDS P194

SHARIF JAMIL P206
BANGLADESH P212

MARJAN MINNESMA P244
THE NETHERLANDS P250

III. DIFFICULTIES/HANDLING

State of play and outstanding issues

The principal issues are set out in the Presidency Note to Council (doc. 12792/17). The directly concerned delegations (DE, DK, FI, LT, LV, PL, SE) are discussing the file in the framework of BALTIFISH, under Danish chairmanship, to explore the scope for reaching a compromise package before the Council. The last BALTIFISH meeting is planned in Luxembourg the day before the Council. Representatives of the Presidency will be present at that meeting and will analyse what elements of solutions discussed can be integrated in the Presidency compromise.

At this stage, all stocks are being discussed. However, a compromise can be found on most of the stocks if a solution is found on the two more problematic issues, which are the Eastern and Western cod stocks and the total ban on eel fisheries. Discussions are indeed likely to focus on these three sensitive political issues.

For Eastern and Western cod, the aspects raised by delegations could be the following:

- the actual levels of the TACs: for the Eastern stock, the Commission suggests a 28% reduction while a roll-over has been proposed for the Western stock. LT, LV, PL and SE request an equal treatment for both stocks. For the Eastern stock, DK, LT, LV and PL defend a roll-over or a lower reduction, whereas SE supports a significant TAC reduction. For the Western stock, DK and DE suggest an increase instead of a roll-over, so as to make full use of the F range of the Plan.
- additional management measures: it seems that most delegations, except DK, agree with the daily bag limits for recreational fisheries and with the closure period in the West, provided that derogations are introduced for small-scale coastal fisheries. PL's priority is to include a closure period also for the Eastern stock during July and August. DK, until now against, in last COREPER opened the door to some flexibility on a closure period (probably in exchange of a higher level of TAC).

As regards the proposed total ban on marine eel fisheries, all delegations oppose such a ban. Most seem to agree on the need to postpone the discussion on a more comprehensive European-wide solution to a later stage, on the basis of a thorough analysis. Until now, the Commission has maintained the need to keep such a ban. Therefore, it would be important to reach a solution with the Commission on this to avoid having to seek unanimity for the adoption of the Regulation. A Commission's and/or Council's Statement could be needed on this point.

For the rest of the stocks, a solution before Council seems within reach: For the five stocks where reductions are proposed (Bothnia herring, Riga herring, Western herring, plaice, Atlantic salmon in Gulf of Finland), a more moderate reduction seems to be agreeable by the concerned delegations. However, the Commission might be reluctant to accept a more moderate decrease for plaice and Riga herring. Also, for Bothnia herring, the question of the respect of the upper range in the Baltic Plan could arise, as FI and SE disagree with the way the Commission has interpreted the advice given by ICES and the compatibility with the provisions of the Plan. Given the difficulty to legally justify other solutions, the most viable solution is to stay within the limits until the latter is amended. A Commission Statement could be needed on this point.

“What are the negotiation positions of the Baltic countries in relation to different fishing stocks?”

	EASTERN COD	WESTERN COD	MARINE EEL	BOTHNIA HERRING	RIGA HERRING	WESTERN HERRING	PLAICE	ATLANTIC SALMON IN GULF OF FINLAND	CENTRAL HERRING	ATLANTIC SALMON IN THE MAIN BASIN	
EU	TAC 28% reduction	TAC rollover	Total ban	TAC reductions	TAC reduction, more than moderate	TAC reduction	TAC reduction, more than moderate	TAC reduction	TAC increase	TAC increase	
DK	Seeking rollover or 28% reduction. Support stock-splitting key. Flexible on closure	Seeking increase	Oppose ban. Wish to postpone discussion on Europe-wide solution	Agreeable to moderate reduction	Agreeable to moderate reduction	Agreeable to moderate reduction	Agreeable to moderate reduction	Agreeable to moderate reduction	Agreeable to moderate increase	Agreeable to roll over	Agreeable to higher increase to reflect catch composition with Central Herring
FI	No expressed position	Seeking daily bag limits & closure (recreational)	Oppose ban. Wish to postpone discussion on Europe-wide solution	Agreeable to moderate reduction. Disagree with Commission interpretation of ICES advice & Baltic plan compatibility	Agreeable to moderate reduction	Agreeable to moderate reduction	Agreeable to moderate reduction	Agreeable to moderate reduction	Agreeable to moderate increase	Agreeable to roll over	Agreeable to higher increase to reflect catch composition with Central Herring
DE	Support stock-splitting key	Seeking increase. Seeking daily bag limits & closure (recreational)	Oppose ban. Wish to postpone discussion on Europe-wide solution	Agreeable to moderate reduction	Agreeable to moderate reduction	Agreeable to moderate reduction	Agreeable to moderate reduction	Agreeable to moderate reduction	Agreeable to moderate increase	Agreeable to roll over	Agreeable to higher increase to reflect catch composition with Central Herring
LV	Seeking equal treatment. Seeking rollover or 28% reduction. Oppose stock-splitting key	Seeking daily bag limits & closure (recreational)	Oppose ban. Wish to postpone discussion on Europe-wide solution	Agreeable to moderate reduction	Agreeable to moderate reduction	Agreeable to moderate reduction	Agreeable to moderate reduction	Agreeable to moderate reduction	Agreeable to moderate increase	Agreeable to roll over	Agreeable to higher increase to reflect catch composition with Central Herring
LT	Seeking equal treatment. Seeking rollover or 28% reduction. Oppose stock-splitting key	Seeking daily bag limits & closure (recreational)	Oppose ban. Wish to postpone discussion on Europe-wide solution	Agreeable to moderate reduction	Agreeable to moderate reduction	Agreeable to moderate reduction	Agreeable to moderate reduction	Agreeable to moderate reduction	Agreeable to moderate increase	Agreeable to roll over	Agreeable to higher increase to reflect catch composition with Central Herring
PL	Seeking equal treatment. Seeking rollover or 28% reduction. Oppose stock-splitting key. Seeking Jul-Aug closure	Seeking daily bag limits & closure (recreational)	Oppose ban. Wish to postpone discussion on Europe-wide solution	Agreeable to moderate reduction	Agreeable to moderate reduction	Agreeable to moderate reduction	Agreeable to moderate reduction	Agreeable to moderate reduction	Agreeable to moderate increase	Agreeable to roll over	Agreeable to higher increase to reflect catch composition with Central Herring
SE	Seeking significant reduction	Seeking daily bag limits & closure (recreational)	Oppose ban. Wish to postpone discussion on Europe-wide solution	Agreeable to moderate reduction. Disagree with Commission interpretation of ICES advice & Baltic plan compatibility	Agreeable to moderate reduction	Agreeable to moderate reduction	Agreeable to moderate reduction	Agreeable to moderate reduction	Agreeable to moderate increase	Agreeable to roll over	Agreeable to higher increase to reflect catch composition with Central Herring



WEEK 1 - ASSIGNMENT 1b:

organise gathered data

Discuss with your country classmates the data you have found behind the storytelling elements in Lohuizen's book. What can you learn from your classmates' approach to gather data in a systematic and consistent way?

Individually: try first to understand the gathered data at a deeper level and search for patterns. Then, organise for yourself the data in categories based on what you think it will best communicate a story.



Output (on the Miro board - week 1):

- With your country fellows: a collection of data from the "stories" in the book.
- Individually: an own organised and categorised data set based on what it could be your start point to communicate a story. **Important:** this will be the input for your final data visualisation!

SPEND TIME WITH DATA

Before starting to visualize, always analyze and spend time with your data, searching for patterns and trying to understand it at a deeper level.

DATASET **LEAVE THIS OUT**

	DATE	TIME	LOCATION	ACTIVITY
1	2023-01-01	08:00	Home	Wake up
2	2023-01-01	08:30	Home	Breakfast
3	2023-01-01	09:00	Home	Get dressed
4	2023-01-01	09:30	Home	Leave home
5	2023-01-01	10:00	Home	Arrive work
6	2023-01-01	10:30	Home	Start work
7	2023-01-01	11:00	Home	End work

LOWEST VALUES

HIGHEST VALUES

INTERESTING!

ORGANIZE AND CATEGORIZE

Often it's good to simplify the data by grouping it into larger categories based on what will best communicate the story.

FEMALE
FRIENDS

NATALIE
BLAISE SARAH
MIRIAM

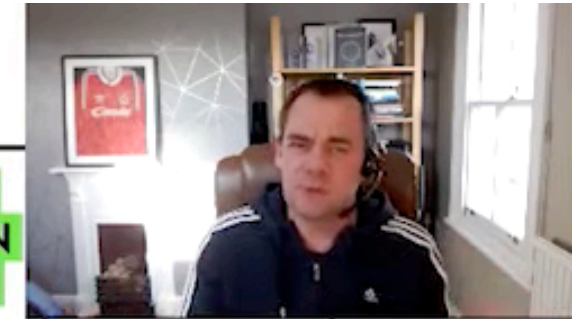
ANIMALS

DUCK
ELEPHANT
CAT SQUIRREL
DOG FOX

LEISURE
ACTIVITIES

READING
CYCLING
GARDENING
COOKING
RUNNING

	EASTERN COD	WESTERN COD	MARINE EEL	BOTHNIA HERRING	RIGA HERRING	WESTERN HERRING	PLAICE	ATLANTIC SALMON IN GULF OF FINLAND	CENTRAL HERRING	ATLANTIC SALMON IN THE MAIN BASIN	
EU	TAC 28% reduction	TAC roll-over	Total ban	TAC reductions	TAC reduction, more than moderate	TAC reduction	TAC reduction, more than moderate	TAC reduction	TAC increase	TAC increase	TAC increase
DK	Seeking roll-over or <28% reduction. Support stock-splitting key. Flexible on closure	Seeking increase	Oppose ban. Wish to postpone discussion on Europe-wide solution	Agreeable to moderate reduction	Agreeable to moderate reduction	Agreeable to moderate reduction	Agreeable to moderate reduction	Agreeable to moderate reduction	Agreeable to moderate increase	Agreeable to roll-over	Agreeable to higher increase to reflect catch composition with Central Herring
FI	No expressed position	Seeking daily bag limits & closure (recreational)	Oppose ban. Wish to postpone discussion on Europe-wide solution	Agreeable to moderate reduction. Disagree with Commission interpretation of ICES advice & Baltic plan compatibility	Agreeable to moderate reduction	Agreeable to moderate reduction	Agreeable to moderate reduction	Agreeable to moderate reduction	Agreeable to moderate increase	Agreeable to roll-over	Agreeable to higher increase to reflect catch composition with Central Herring
DE	Support stock-splitting key	Seeking increase Seeking daily bag limits & closure (recreational)	Oppose ban. Wish to postpone discussion on Europe-wide solution	Agreeable to moderate reduction	Agreeable to moderate reduction	Agreeable to moderate reduction	Agreeable to moderate reduction	Agreeable to moderate reduction	Agreeable to moderate increase	Agreeable to roll-over	Agreeable to higher increase to reflect catch composition with Central Herring
LV	Seeking equal treatment		Oppose ban. Wish to postpone discussion on Europe-wide solution	Agreeable to moderate reduction	Agreeable to moderate reduction	Agreeable to moderate reduction	Agreeable to moderate reduction	Agreeable to moderate reduction	Agreeable to moderate increase	Agreeable to roll-over	Agreeable to higher increase to reflect catch composition with Central Herring
	Seeking roll-over or <28% reduction. Oppose stock-splitting key	Seeking daily bag limits & closure (recreational)									
LT	Seeking equal treatment		Oppose ban. Wish to postpone discussion on Europe-wide solution	Agreeable to moderate reduction	Agreeable to moderate reduction	Agreeable to moderate reduction	Agreeable to moderate reduction	Agreeable to moderate reduction	Agreeable to moderate increase	Agreeable to roll-over	Agreeable to higher increase to reflect catch composition with Central Herring
	Seeking roll-over or <28% reduction. Oppose stock-splitting key	Seeking daily bag limits & closure (recreational)									
PL	Seeking equal treatment		Oppose ban. Wish to postpone discussion on Europe-wide solution	Agreeable to moderate reduction	Agreeable to moderate reduction	Agreeable to moderate reduction	Agreeable to moderate reduction	Agreeable to moderate reduction	Agreeable to moderate increase	Agreeable to roll-over	Agreeable to higher increase to reflect catch composition with Central Herring
	Seeking roll-over or <28% reduction. Oppose stock-splitting key. Seeking Jul-Aug closure	Seeking daily bag limits & closure (recreational)									
SE	Seeking equal treatment		Oppose ban. Wish to postpone discussion on Europe-wide solution	Agreeable to moderate reduction. Disagree with Commission interpretation of ICES advice & Baltic plan compatibility	Agreeable to moderate reduction	Agreeable to moderate reduction	Agreeable to moderate reduction	Agreeable to moderate reduction	Agreeable to moderate increase	Agreeable to roll-over	Agreeable to higher increase to reflect catch composition with Central Herring
	Seeking significant reduction	Seeking daily bag limits & closure (recreational)									



Reminder: start spotting locations!

Search for grids in the public space and explore possibilities to place real objects on them to visualise data.

Work as a film director! Spend time looking for suitable public locations in your hometown where you could exhibit your physical data visualisation at the end of the project.

Take pictures from those locations; they will not only help you as a source of inspiration, but you will also need them as a context when making and showing a mock-up (prototype) of your physical data visualisation.

Search for grids



Spot locations and take pictures

